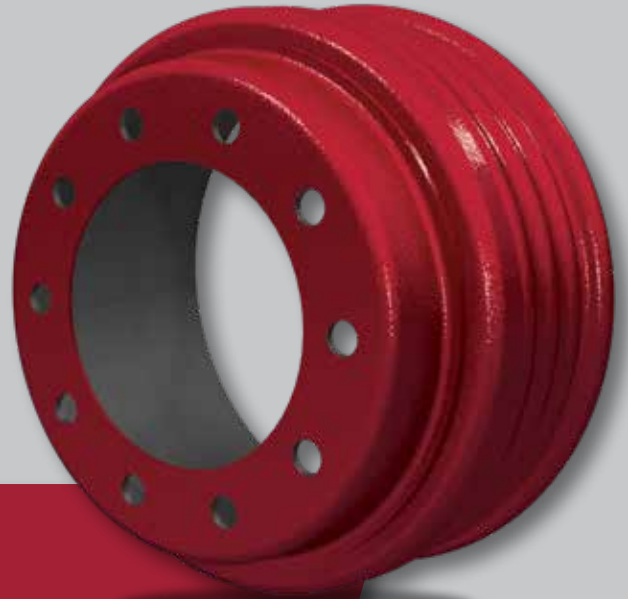
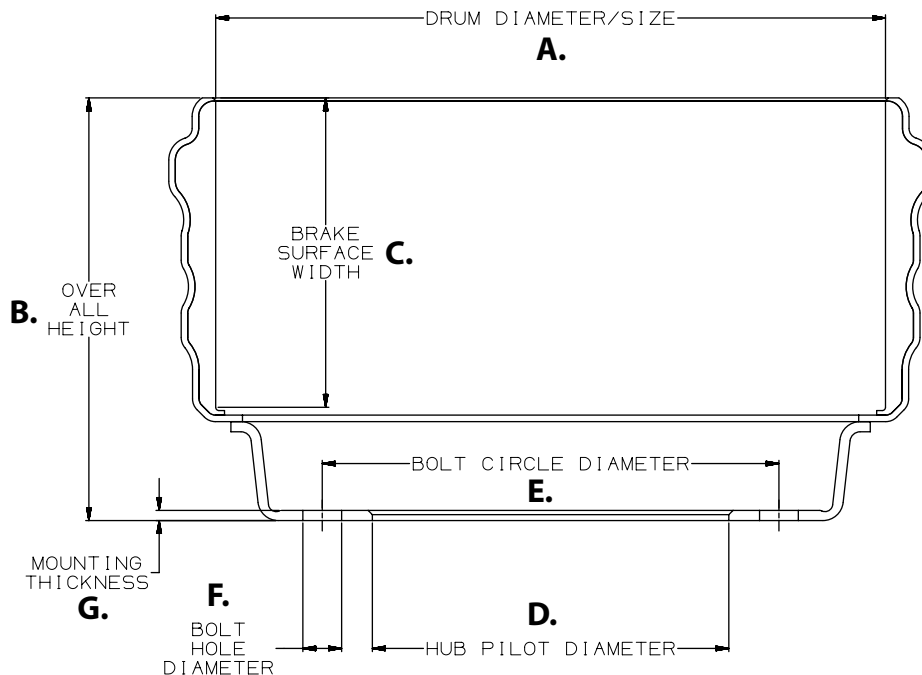


**CentriFuse®**



## 600004HD SPECIFICATIONS

- |                                    |                              |
|------------------------------------|------------------------------|
| A. Drum Diameter/Size: 16.5" x 7"  | F. Bolt Hole Diameter: 0.96" |
| B. Overall Depth: 10.41"           | G. Mounting Thickness: 0.25" |
| C. Brake Surface Width: 7.64"      | H. Number of Bolt Holes: 10  |
| D. Hub Pilot Diameter: 8.78"       | I. Weight: 100 lbs.          |
| E. Bolt Circle Diameter: 285.75 mm |                              |



For more information on  
CentriFuse, call 855.743.3733  
or visit [www.motorwheel-intl.com](http://www.motorwheel-intl.com)

600004HD Rev A 10-24

©2024 Motor Wheel, Inc. All Rights Reserved. All trademarks shown are owned by Motor Wheel, Inc., or one of its affiliates, in one or more countries.

Motor Wheel is a brand of Hendrickson