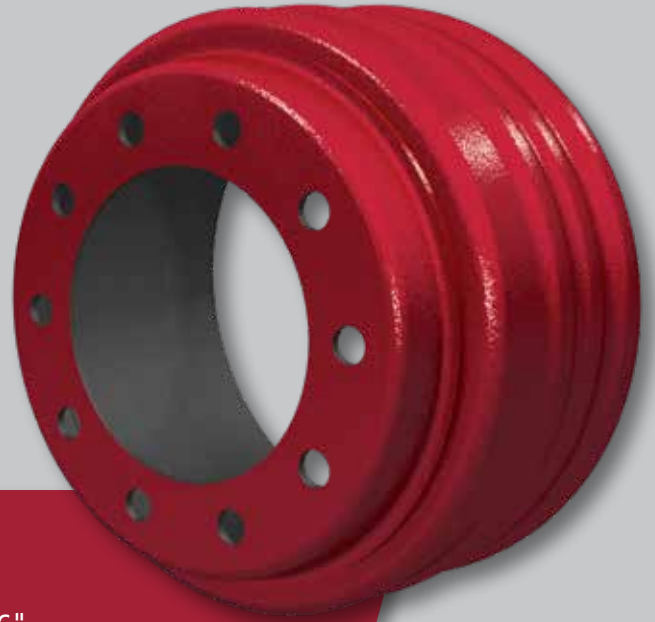
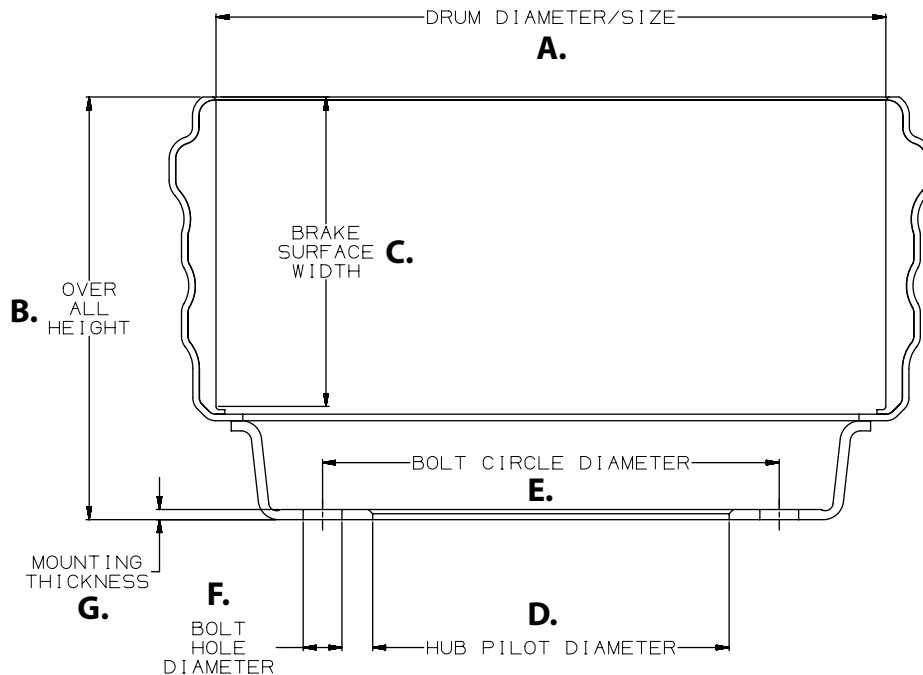


CentriFuse®



600013HD SPECIFICATIONS

- | | |
|------------------------------------|------------------------------|
| A. Drum Diameter/Size: 16.5" x 8" | F. Bolt Hole Diameter: 0.96" |
| B. Overall Depth: 10.91" | G. Mounting Thickness: 0.25" |
| C. Brake Surface Width: 8.55" | H. Number of Bolt Holes: 10 |
| D. Hub Pilot Diameter: 8.78" | I. Weight: 104 lbs. |
| E. Bolt Circle Diameter: 285.75 mm | |



For more information on
CentriFuse, call 855.743.3733
or visit www.motorwheel-intl.com

600013HD Rev A 10-24
©2024 Motor Wheel, Inc. All Rights Reserved. All trademarks shown are
owned by Motor Wheel, Inc., or one of its affiliates, in one or more countries.