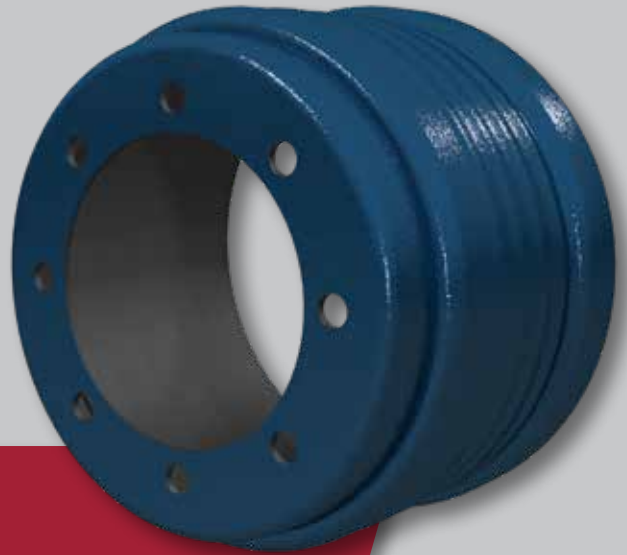
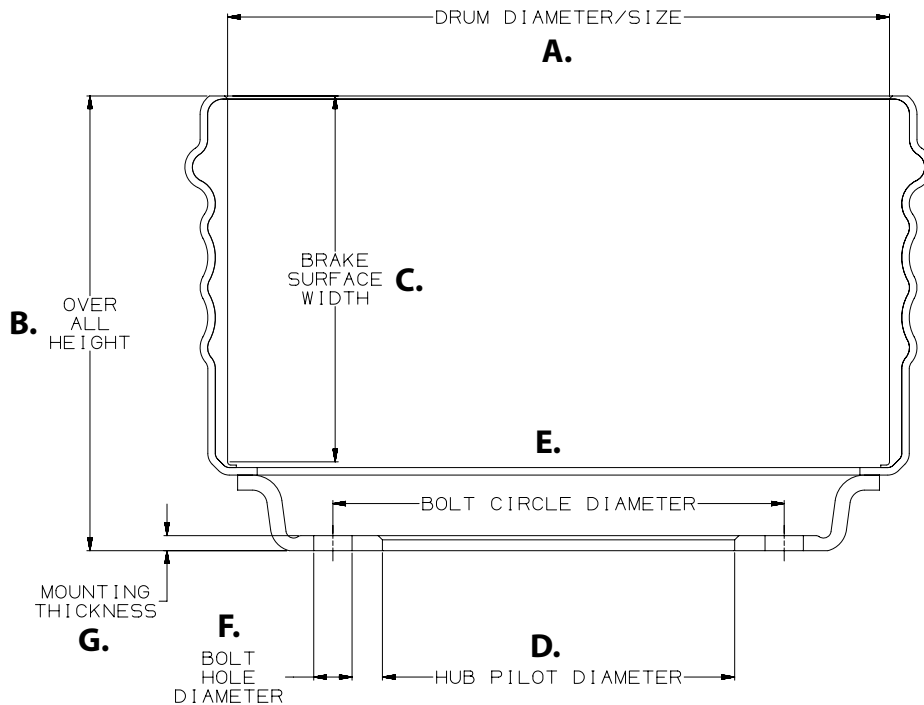


CentriFuse®



91438B SPECIFICATIONS

- | | |
|---------------------------------------|---|
| A. Drum Diameter/Size: 15.0" x 8.625" | F. Bolt Hole Diameter: 0.92" |
| B. Overall Depth: 11.19" | G. Mounting Thickness: 0.25" |
| C. Brake Surface Width: 9.11" | H. Number of Bolt Holes: 8 |
| D. Hub Pilot Diameter: 9.00" | I. Weight: 90 lbs. |
| E. Bolt Circle Diameter: 275 mm | <i>For industry axles except Meritor TN</i> |



For more information on
CentriFuse, call 855.743.3733
or visit www.motorwheel-intl.com

91438B Rev A 10-24

©2024 Motor Wheel, Inc. All Rights Reserved. All trademarks shown are owned by Motor Wheel, Inc., or one of its affiliates, in one or more countries.

Motor Wheel is a brand of Hendrickson